



MERRICK
FOUNDATION

Annual Report
65 Years of Impact

From the President

Larry Benson

As we reflect on the past year, I'm filled with gratitude for the generosity, vision, and trust that you—our donors, partners, and neighbors—have placed in Merrick Foundation. 2024 was a year of meaningful impact and steady growth, and I'm proud to share just a few of the highlights with you.

Together, we awarded \$183,222 in grants across our communities and \$169,800 in scholarships to 179 students pursuing their post high school dreams. We also welcomed 12 new funds to the Foundation—ranging from scholarships to acorn and designated funds—each one representing a new commitment to the future of Merrick County.

We ended the year with a strong foundation:

- \$20,940,543 in assets
- 239 total funds under our care
- \$776,778 in total donations received

Your continued support makes all of this possible—and reminds us that our work isn't just for today, but for tomorrow and beyond. As we look ahead, our commitment remains steadfast. In times of economic change, we're holding true to a stable investment policy designed to preserve and grow our impact over the long term. It's all part of our long-term vision: to be a reliable resource for Merrick County, meeting both today's needs and tomorrow's possibilities.

If you've ever thought about how you might make a difference—through a gift, a scholarship, a fund, or simply an idea—we'd love to hear from you. Let's talk about what matters most to you, and how together, we can shape a legacy that lasts. Thank you again for being part of this journey. Your support continues to make all the difference.

BOARD MEMBERS



Larry Benson
Chapman



Tyson Benner
Central City



April Bolte
Central City



Mary Church
Clarks



Whitney Hake
Palmer



Jayme Hans
Clarks



Brandon Konwinski
Silver Creek



Shelly Kuta
Silver Creek



Amy Kyes
Archer



Chuck Mason
Central City



Chase Samuelson
Palmer



Mary Steiner
Chapman



DJ Talbott
Central City



Trent Wagner
Central City



Dallas Zimbelman
Central City

STAFF MEMBERS



Courtney Retzlaff
Chief Financial Officer



Shauna Graham
Chief Development Officer



Rachel Brandquist
Program Manager

WHAT WE DO



GATHER

We partner with individuals, families, businesses, and nonprofits to create funds that bring their charitable goals to life.



GROW

In partnership with a team of trusted advisors, we invest funds to grow endowments, enabling us to support the evolving needs and emerging opportunities across Merrick County.



GRANT

Guided by our donors' intentions and goals, we invest in communities and students throughout Merrick County to help ensure it remains a vibrant place to live, work, and play.

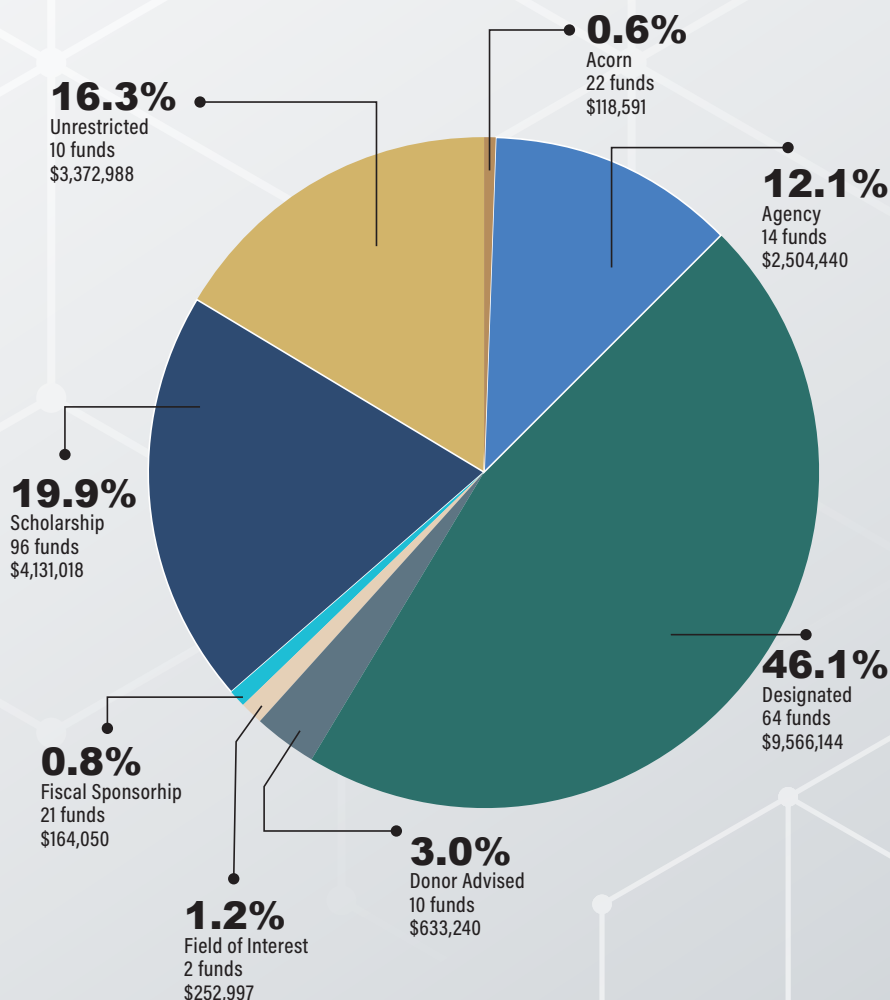
Statement of Financial Position

as of October 31, 2024

Assets		Liabilities and Net Assets	
Cash and investments	\$20,382,725	Funds held for others	\$2,504,440
Prepaid expenses	4,114	Grants and scholarships payable	172,765
Property and equipment	121,835	Payables	23,910
Real estate investment	419,948	Unearned rent	400
Receivables	11,921	Net assets	18,239,028
Total Assets	\$20,940,543	Total Liabilities and Net Assets	\$20,940,543

This consolidated statement of financial position was taken from our audited financial statement, which is prepared by AMGL CPAs & Advisors. Copies of our annual audit are available in our office. Copies of our IRS Form 990 are available in our office or on our website at www.merrick-foundation.org.

ASSETS BY FUND PURPOSE



DEEP ROOTS, ONGOING IMPACT: THE WEGNERS' WHY

For Kate and Neil Wegner, giving back isn't just something they do — it's part of who they are. With strong roots in Merrick County, their story is one of deep connection to community, family, and legacy. From Kate's childhood in Central City to Neil's multi-generational ties to farming and philanthropy, to now raising their young family in Palmer, the Wegners represent what it means to invest in the place you call home.

"My husband, Neil, and I chose Palmer to build our life," Kate says. "We have three kids—Connar, Beau, and Charlee. Two are in the Palmer school system, and one is in daycare at the Palmer Child Care. Palmer is a great place to raise a family because of the many people who are truly dedicated to growing the community and making it a place where families want to stay."

Kate and Neil's giving journey began at a Merrick Foundation event. "We started donating at the dueling pianos event back in 2020. What really drew us in was how easy it was to set up monthly giving. It didn't feel like a burden — it was just part of the budget, automatic. We didn't have to think about it, but we knew it was making a difference."

Wegner understands that if you want to see change, you have to be part of the solution. "You can't just rely on the same people who have always stepped up," she reflects. "It's our turn now. The next generation needs to realize the impact we can make — for our kids and for future generations."

Giving back has always been part of Wegner's story. From Kate being part of the Greek community in college, where they regularly fundraised, to becoming an initial board member of Palmer Child Care, she has seen firsthand how local support can drive lasting change.

"When we dreamed about opening and then expanding our daycare, it felt like a far-off goal. But thanks to generous donors and grant support from the Merrick Foundation, it happened so much faster than we expected. That's the power of having resources ready when opportunities arise."

For the Wegners, the impact of giving is both personal and generational.

"We hope our kids — and maybe even our grandkids — choose to stay here. Palmer is the kind of place where families come back. We want them to return to a community they're proud of — a



Photo by Cassie Price Photography

community that's grown because people cared enough to invest."

Both Kate and Neil have also personally experienced the impact of the Merrick Foundation.

"When I was in college, I received scholarships from the Foundation — some of which were even Palmer-specific. You don't always realize the importance of that kind of support until you're older. It made a big difference for me." Neil was also a recipient of a Merrick Foundation scholarship.

When asked why they choose to give through the Foundation, Kate responds without hesitation: "I love that it's managed fairly. The Foundation isn't just supporting one group — they're looking at the big picture. I trust that the money is being used well."

Their advice for anyone thinking about becoming a monthly donor? "Just start. Any donation — of any size — is a good start. Even a small monthly gift can make a big impact over time. It's simple, it's automatic, and it truly makes a difference."

Take Action Today:

Join Neil and Kate — and countless others — in making a lasting impact on our community. Your support, no matter the size, can help shape the future of Merrick County. Sign up for monthly giving at www.merrick-foundation.org or by calling (308) 946-3707 — and help us grow, together.

MERRICK FOUNDATION GRANTEES

Bison After School Program
Bison Volleyball Club
Central City Boy Scouts -
Eagle Scout Project
Central City Boy Scouts Troop 102
Central City Legion Baseball
Central City Public Library
Central City Public Schools
Chapman Township Cemetery
Chapman Volunteer Fire & Rescue
Clarks Public Library

First Light Child Advocacy Center
Heartland United Way
High Plains Community Schools
Little Storm Childcare
Lone Tree Quilt Guild
Maplewood Corners
Merrick County 4-H Council
Merrick County Health & Fitness Center
Merrymakers Association
Midland Area Agency on Aging
Nebraska Christian Schools

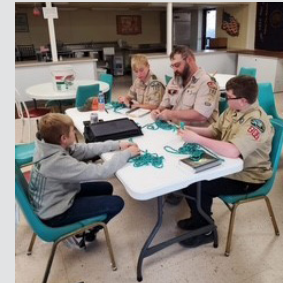
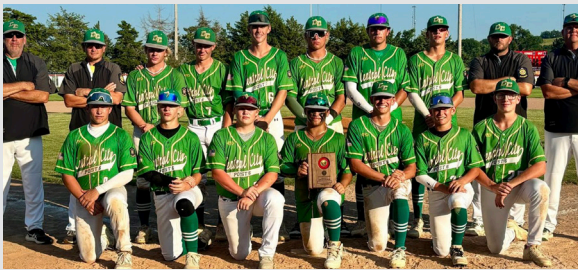
Palmer Commercial Club
Palmer Public Schools
Palmer Rescue Squad
Palmer Youth Sports Association
Platte Peer Group
Silver Creek Cemetery Association
Silver Creek Township Library
The Leadership Center
Third City Community Clinic
Village of Clarks
Willow Rising

32 Total Organizations • \$183,222 Total Funded

Is Your Organization Next?

Grant deadlines for nonprofits or community groups are the first of January, April, July, and October each year.

Visit www.merrick-foundation.org today to apply!



A Legacy That Lives On

The Lasting Impact of James & Myrtle Clarke

Nearly fifty years ago, James and Myrtle Clarke made their first gift to Merrick Foundation—a simple act of generosity that has grown into something extraordinary. Today, their legacy lives on through two endowed funds that continue to shape lives across Merrick County.

The Myrtle & Jim Clarke Scholarship Fund has helped nearly 175 students pursue higher education, awarding more than \$110,000 in scholarships. Each year, new recipients benefit from the Clarks' belief in the power of opportunity and the importance of investing in the future. But their belief in investing in people didn't stop at education.

The Clarke Recreation Fund, their second endowment fund, reflects a deep commitment to youth involvement and community spirit. With more than \$112,000 granted so far, the fund supports recreational and athletic programs in Central City, Palmer, Silver Creek, and Clarks, providing opportunities for kids to grow,

compete, and belong. From baseball and softball to track, volleyball, football, and wrestling, the Clarks' generosity continues to shape the next generation.

Back in 1989, Jim said it best "Sports help to build a sense of competitiveness in kids and I like to see that develop...this will help ensure that all kids have the chance to participate if it's their desire."

Though James and Myrtle have since passed, their influence lives on—not just through the grants and scholarships that carry their names, but also through the ongoing generosity of their family. The local grocery store has been a family tradition, passed down from one generation to the next. Throughout the years, they've remained deeply involved in the community, supporting local groups and organizations whenever they can. Giving, it seems, runs in the family.

"I was always taught, in order to have a strong, thriving community, you need to build and give back to the community you cherish. We have, and will continue the tradition of supporting the community



“I was always taught, in order to have a strong, thriving community, you need to build and give back to the community you cherish.”

- Morgan Clarke

that supports us with enriching education, improving or building new facilities, and helping ensure we maintain a strong foundation for everyone that lives here,” states Morgan Clarke, granddaughter, current store manager and prior Merrick Foundation board member.

Through Merrick Foundation, both of the Clarkes’ funds are carefully managed, ensuring their wishes are honored and their impact preserved. The Foundation takes care of the details—allowing donors like the Clarkes to

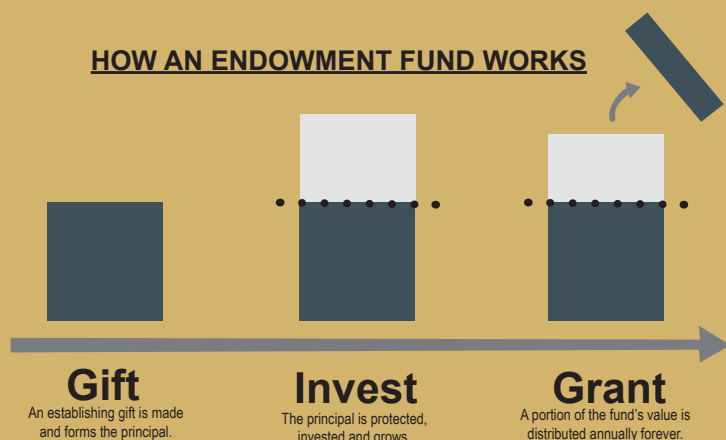
focus on what matters most: the causes they love.

That’s the power of an endowed fund.

One generous decision, guided by love for community, can continue to grow—reaching new people, creating new stories, and inspiring others for decades to come. If you’re inspired by the Clarkes’ legacy, consider starting your own endowed fund with Merrick Foundation. Your story of giving could be the next to shape Merrick County’s future.

Why Establish an Endowment?

HOW AN ENDOWMENT FUND WORKS



Your Legacy, Your Way

An endowed fund allows you to support the causes and organizations closest to your heart—year after year. You choose the purpose, and we ensure your vision is honored for generations to come.

A Gift That Grows

Your original gift is invested wisely, with only the earnings used for annual grantmaking. This means your impact doesn’t stop—it builds, strengthens, and expands over time.

Simple, Strategic Giving

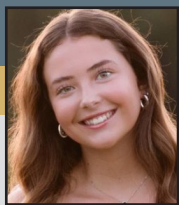
We take care of the details—investment management, grant distribution, and reporting—so you can focus on the joy of giving and the good it creates.

Inspiring Generosity

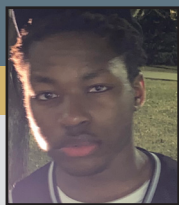
Your decision to create a fund does more than support today’s needs—it sets an example. It invites your family, your peers, and your community to dream bigger, give boldly, and believe in a future shaped by generosity.

One gift. Your vision. A ripple of good that never stops.

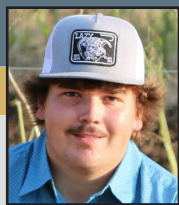
2025 Scholarship Awards



Rylee Ackerson
Raymond, Leonard & Lois
Steger Memorial



Bryan Afata
Austin & Cleo Vanderford



Garrett Alexander
J. Oren Hoback Memorial;
Silver Creek Alumni



Austin Anderson
Emil & Dorothy Czarnick



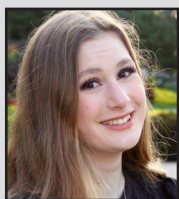
Kenyon Bandt
Edna I. Widman Memorial;
Merrick County
Youth Council



Nathan Bashige
Austin & Cleo Vanderford



Katelynn Blomstedt
Austin & Cleo Vanderford



Megan Blomstedt
Donald Nouzovsky Memorial



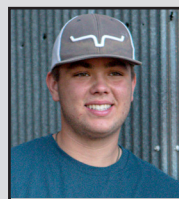
Graci Boersen
Austin & Cleo Vanderford



Clay Brandenburger
Austin & Cleo Vanderford



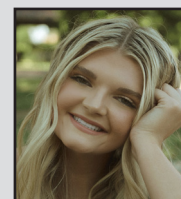
Ryan Brandes
Leonard & Doris Aerni
Memorial; Stanley Ferris
Agriculture



Cole Broekemeier
Jacob Johnston, Class of
2025, Memorial; Leonard &
Doris Aerni Memorial; Tim
Christensen Memorial



Kit Brooks
Charles & Doris Benner;
Robert & Lillian Krug
Memorial



Emma Brown
William L. & Velma R.
McLean



Gretchen Brown
Clinton M. Wegner;
Gary Monter Memorial



Gwyneth Brown
Clinton M. Wegner



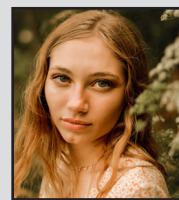
Isabelle Brumbaugh
William & Emma Steffen



Alexandra Bruning
Austin & Cleo Vanderford



Adelaide Buhlke
Austin & Cleo Vanderford



Elia Buhlke
Raymond W. Starostka
Memorial; Warren & Virginia
Marsh Memorial



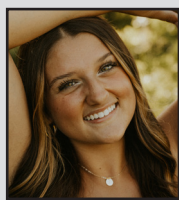
Tristan Burbach
Austin & Cleo Vanderford



Ethan Burdett
Austin & Cleo Vanderford



Akeyli Bush
Donald Nouzovsky Memorial



Faith Campa
William & Emma Steffen



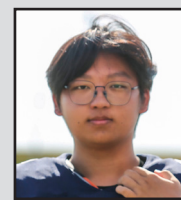
MaKenna Carlson
James & Marilyn Heins



Courtney Carlstrom
You Are Worth It



Tyler Carroll
Virgil & Nora Lindner



Ho Yeung Chen
Austin & Cleo Vanderford



Caitlin Chiles
Albert E. & Dorothy E.
Emgarten Memorial



Madison Chrisman
Berney-Manuel; Central City
Ambulance Association-First
Responders



Abigail Davenport
Summer Paulsen Simon,
Class of 2001, Memorial;
William & Emma Steffen



Chandra Davis
Edward Mitchell



Trevor Davis
Michael V. Bittering
Memorial



Cyndee DeLosh
William & Emma Steffen



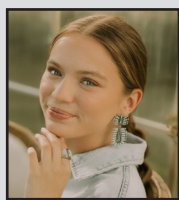
Kyle Dittmer
Darrell & Twila Widman
Endowed Medical



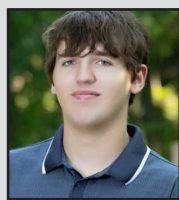
Anh Tuan Doan
Austin & Cleo Vanderford



Joslynn Donahey
Clinton M. Wegner



Ashlyn Donscheski
Clinton M. Wegner



Hayden Dubas
Austin & Cleo Vanderford



Katie Dunham
Ervin & Bonnie Blauhorn



Emmerson Earl
Clinton M. Wegner



Makayla Enevoldsen
Maynard & Lois Fullington;
Raymond, Leonard & Lois
Steger Memorial

\$169,800 in Awards to 179 High School & College Students



Jade Erickson
Donald Nouzovsky
Memorial



Gavin Falk
Donald Nouzovsky
Memorial



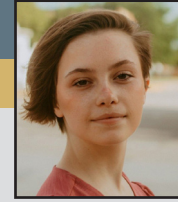
Van Fasbender
Donald Nouzovsky
Memorial



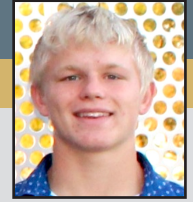
Raegan Ferraro
Albert E. & Dorothy E.
Emgarten Memorial



Noah Fischer
Austin & Cleo
Vanderford



Laiken Friend
Joe Hesselgesser



Gage Friesen
Myrtle & Jim Clarke



Aubrey Garfield
Donald R. &
Jackie Sampson



Emily Gay
Clinton M. Wegner



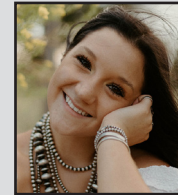
Shaun Goyette
Bonnie Kohl Memorial



Ashton Gragg
Myrtle & Jim Clarke



Joshua Green
Myrtle & Jim Clarke



Taylyn Greving
Gary Bader Memorial; LeRoy
Hongsemeier FFA Memorial;
Willa Freeland, Women in
Business



Molly Griess
William & Emma Steffen



Gracie Hackel
Austin & Cleo Vanderford



Carly Halbgewachs
Austin & Cleo Vanderford



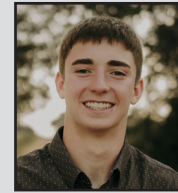
Rachel Hale
Austin & Cleo Vanderford



Ayden Hans
Austin & Cleo Vanderford



Kirk Hebda
Albert E. & Dorothy E.
Emgarten Memorial



Haden Helgoth
Austin & Cleo Vanderford;
Merrick Foundation
Founders



Isaac Herman
Ralph Stanley & Ella
Halstead Severance
Memorial



Oliver Herman
Austin & Cleo Vanderford; Glen
D. & Doris E. Neel Memorial



Shelby Hostler
Leland & Shirley Greving;
Merrick County Pork
Producers



Allie Howell
Myrtle & Jim Clarke



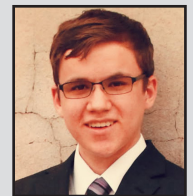
Joel Huang
Albert E. & Dorothy E.
Emgarten Memorial



Blake Jensen
Warren & Virginia
Marsh Memorial



Kale Jensen
Raymond, Leonard &
Lois Steger Memorial



David Johnson
Austin & Cleo Vanderford



Lindee Kelley
Austin & Cleo Vanderford



Claire Kelly
Ray & Mildred Miller Memorial



Logan Kershaw
Gregory Rinkol Memorial;
Larry Meyer Memorial; Les
Johnson Memorial



Bladen Kohl
Ervin & Bonnie Blauhorn



Brianna Konwinski
Austin & Cleo Vanderford



Jacob Kosmicki Gutierrez
Dinsdale Sophomore



Elizabeth Krance
Griffith Family; Leonard &
Doris Aerni Memorial



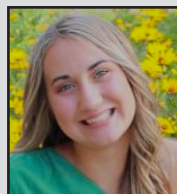
Brody Kriz
Clinton M. Wegner



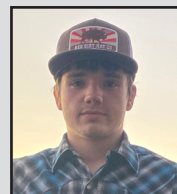
Bryce Kunz
Joe Hesselgesser;
Matthew Fishburn



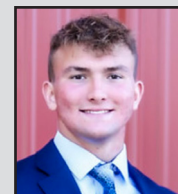
Allie Kunze
Carole A. Joseph Memorial



Clara Kunze
William & Emma Steffen



Taylor Kurz
Clinton M. Wegner; Henry
"Bud" Santin Memorial



Gabriel Langemeier
Donald Nouzovsky Memorial

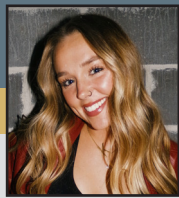


Lucie Lautenschlager
Clinton M. Wegner

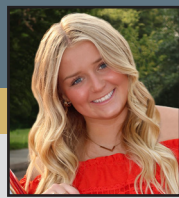
2025 Scholarship Awards



Ah-Rim Lee
Austin & Cleo
Vanderford



Kamryn Lemburg
American Legion Post #6 40
& 8; William & Emma Steffen



Lacy Lemburg
Lester & May Fishler and
Raymond & Ruth Kula
Memorial; Silver Creek Alumni



Addison Lindburg
Myrtle & Jim Clarke



Dalton Lovejoy
Lindner-Van Pelt Heritage



Dylan Lovejoy
Donald R. & Jackie Sampson



Colter Lueders
Austin & Cleo
Vanderford



Liliana Macken
Austin & Cleo Vanderford



Karlee McClellan
Harry F. Prochaska &
Edith Stone Prochaska
Endowment



Morgan McClellan
Dinsdale Sophomore



Xander McComb
Donald Thies Memorial



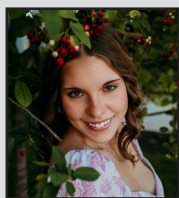
Elaina McHargue
Austin & Cleo Vanderford



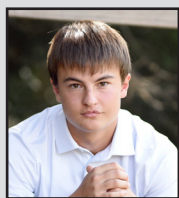
Aden Mercer
Shirley Mae Lewis Memorial



Zander Merchant
Austin & Cleo
Vanderford



Addison Moore
Merrick Foundation
Industrious Student



Camden Morris
Austin & Cleo Vanderford



Makenna Mottl
Gary Monter Memorial; Mary
Chochon Memorial; Richard
"Dick" Chochon Memorial



Kyleigh Muller
Dinsdale Sophomore



Sidonie Mulumba
Austin & Cleo Vanderford



Marlie Mundt
Austin & Cleo Vanderford;
Elton & Nancy Erickson



Sarah Musil
Bob & Bonnie Clark
Memorial



Chelsey Myers
Richard J. Steiner Memorial;
William & Emma Steffen



Amanda Needham
Austin & Cleo
Vanderford



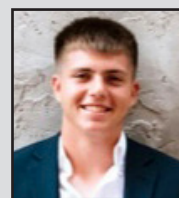
Jonathan Needham
Albert E. & Dorothy E.
Emgarten Memorial



Jacob Nokelby
Austin & Cleo
Vanderford



Brynn Ohlman
Austin & Cleo
Vanderford



Brock Olivo
Berney-Manuel



Sahara Paup
Derek Aspedon



Vaughn Pedersen
Austin & Cleo Vanderford



Elijah Peters
Donald Nouzovsky
Memorial



Nehemiah Peters
Donald Nouzovsky
Memorial



Derek Pfeifer
Raymond, Leonard &
Lois Steger Memorial



Dylan Pfeifer
Charles & Ann Kuhlman
Memorial; Raymond, Leonard
& Lois Steger Memorial



Claire Pipher
Donald Nouzovsky
Memorial



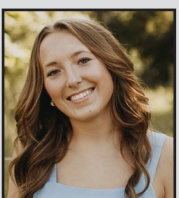
Kaylee Powell
Eugene Fishburn



Rachel Rathjen
Leonard & Doris
Aerni Memorial



Gatlin Reimers
Clinton M. Wegner; Gary
Monter Memorial; Palmer
High School Class of 1975



Brookly Richardson
Benjamin Thomas
Lindner Memorial



Kaden Rieken
Austin & Cleo
Vanderford



Brayden Rinkol
Donald Nouzovsky
Memorial

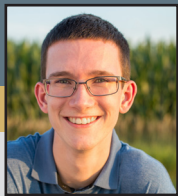


Mason Rinkol
Albert E. & Dorothy E.
Emgarten Memorial



Sarah Roberts
Leonard & Doris
Aerni Memorial

2025 Scholarship Awards



Caleb Rowe
Austin & Cleo Vanderford;
Ernest & Peggy Nabity
Memorial



Jakob Ruhl
Joe Hesselgesser



Hallie Rutherford
Jack & Dorothy Burger



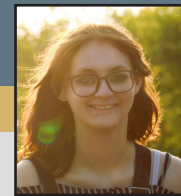
**Jonathan
Ruvalcaba-Guzman**
Clinton M. Wegner



Charlee Ryan
William & Emma Steffen



Truman Ryan
Fred, Esther, Donald & Shirley
Mae Lewis Family; Hunter Philip
Hawthorne Memorial; Phoebe A.
McCullough-Barbara A. McGuire
Memorial Education



Dakota Sage
Albert E. & Dorothy E.
Emgarten Memorial



Emily Samuelson
Harry F. Prochaska &
Edith Stone Prochaska
Endowment



Josie Sawyers
Tom & Nancy Wagner



Chloe Scheer
Dinsdale Sophomore



Jerzie Schindler
Gail Gregg Ferris
Registered Nurse



Lindy Schmidt
Tyler Hook Hillmer Memorial



Garrett Schmierer
Austin & Cleo Vanderford



Riley Schreiber
Donald Nouzovsky
Memorial



Emma Schuele
Elwin & Lucile Ferris;
Joel Holbrook Memorial



Terrigen Sebek
Austin & Cleo
Vanderford



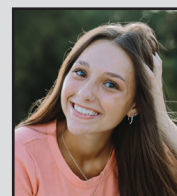
Eden Selden-Berger
Central City Ambulance
Association-First Responders;
William & Emma Steffen



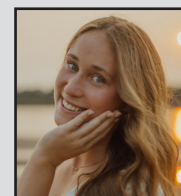
Caleb Sharman
Austin & Cleo Vanderford;
Ed & Laurie Dexter



Carter Simonsen
Joe Hesselgesser



Izabella Smith
Aaron Stephenson
Memorial



Emma Steinke
Willis C. Lenz Memorial



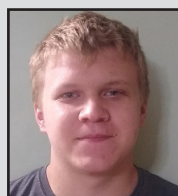
Noah Stocker
Leonard & Doris
Aerni Memorial



Grace Stromberg Worn
Clinton M. Wegner



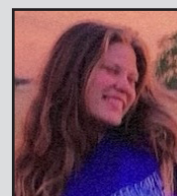
Grace Strong
Richard Mattson
Memorial



Joshua Strong
Austin & Cleo Vanderford



Hannah Swanson
Donald Nouzovsky
Memorial



Sophie Swanson
Donald Nouzovsky
Memorial



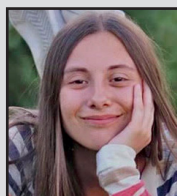
Elanie Sweet
Austin & Cleo Vanderford;
Brynlee Zimbelman
Memorial



Derek Talavera
Barry & Alta Marsh



Anna Tibbetts
Alice Klingenberg
Memorial



Hannah Urban
Austin & Cleo Vanderford



Gracie Vakiner
Dylan Van Pelt Memorial; Leonard
& Doris Aerni Memorial; Lonny &
Wanda Duennerman Family



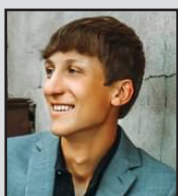
Volynn Wall
Albert E. & Dorothy E.
Emgarten Memorial



McKinley Warnick
Myrtle & Jim Clarke



Landon Webb
Hohnroth Family



Levi Webb
Willis C. Lenz Memorial



Brayden Weller
Clinton M. Wegner; Guy
& Pauline Lamberson
Memorial



Fallon Wells
Hohnroth Family



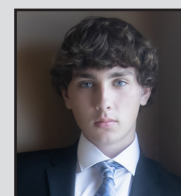
Kenzie Wert
Leonard & Doris
Aerni Memorial



Seth Wert
Calvin Lepp Memorial;
Dwayne & Carmen Van Pelt



Max Wingfield
Joe Hesselgesser



Austin Wood
William L. &
Velma R. McLean

Scholarship Awards



Alyssa Wostrel
Austin & Cleo Vanderford;
Karen & Danielle Bannister
Memorial; Tom & Teri Beck



Qiong Wu
Austin & Cleo Vanderford



Brecken Yoder
Austin & Cleo Vanderford



Emma Yrskoski
Edward Gentleman
Memorial



Yunpeng Zhang
Austin & Cleo Vanderford



Lydia Ziemba
Larry Dearing,
DVM Memorial



Kenzie Wruble
Wayne & Mildred Hilder;
William & Emma Steffen



Olivia Wymer
Matthew Fishburn;
Raymond, Leonard & Lois
Steger Memorial



Abigail Young
Central City Scale-Ron &
Jeanette Hawthorne



Rose Zelinski
Myrtle & Jim Clarke



Lainie Ziemba
Barney Bockerman Memorial;
Ethel Sweet Memorial; Justin
"Skippy" Bennett Memorial

Book of Memory

Donations received in memory of a loved one are recorded in the Book of Memory, which is always on display at our office. Donations can be made in memory of a loved one to a specific fund or our General Endowment. Any donations made to our General Endowment are used to fund various community projects throughout Merrick County. The time frame captured below is from January 1, 2024 - December 31, 2024.

Dorothy Adkinson	1930-2022	Leland Greiving	1932-2020	William L. McLean	1912-2021
Kenneth Aerni Sr.	1943-2024	Paul Grosshans	1933-2009	Velma R. McLean	1909-2006
Chas Anderson	1868-1925	Dee Grosshans	1933-2013	Tom McMahon	1939-2012
Sherryl Arnsmeier	1953-2024	Norma Lee Gillan Haith	1922-1997	Richard Musgrave	1950-2023
Vanice Bahensky	1918-2024	Roger "Hank" Hanquist	1930-2024	Greg Nicholas	1947-2024
Merlin Black	1921-2008	Shirley Hartford	1937-2023	Doris Nicholas	1938-2024
Lois Black	1919-2008	Hunter Philip Hawthorne	1999-2020	Dale Nielson	1937-2024
Steven Blodgett	1951-2024	Ron Hawthorne	1935-2020	Lucille Nordstrom	1932-2024
Doris Bodeman	1918-2009	Jeanette Hawthorne	1937-2020	Barbara Ogden	1924-2024
Dorsey Bodeman	1942-2022	Alan Heuermann	1964-2024	Pamela Ostransky	1960-2024
Patricia "Pat" Bolte	1951-2022	Wayne Hilder	1921-2023	Doris Pavlik	1933-2024
Richard Bringelson	1940-2024	Mildred Hilder	1925-2008	Lisa Pedersen	1969-2024
Rose Catlett	1932-2024	Dale Hilderbrand	1930-2024	Marilyn Pierpont	1936-2024
Tim A. Christensen	1960-2022	Alice Benner Hoback	1921-1967	Harry F. Prochaska	1911-2000
Robert V. Clark	1938-2023	Roger Hohnroth	1938-2001	Edith Stone Prochaska	1914-1968
Joe Costello	1979-2022	Virgil Holz	1934-2024	Patricia Prochaska	1938-2023
Carol Daberkow	1937-2024	Tyler Hook Hillmer	1998-2013	Mike Reeves	1950-2023
Loris Dankert	1933-2024	Bonnie Hudnall	1931-2024	August "Augie" Retzlaff	1933-2011
Barney Danklesen	1953-2024	John Jefferson	1931-2020	Corwin "Corky" Roscoe	1935-2023
Wesley Davis	1926-2015	Delores Jefferson	1934-2024	Merl Ross	1931-2024
Robert Davis	1932-2022	Scott Johnson	1947-2024	Lola Ross	1926 -2024
Larry Dearing	1946-2019	Barbara Justice	1932-2024	Harold Rudolf	1929-2024
John Demel	1942-2024	Kenneth Kuehner	1939-2023	Donald Sampson	1905-1994
Gloria Dinsdale	1926-2024	Philip Kufeldt	1927-1988	H. Kay Sawyer	1936-2024
Jack Dinsdale	1918 -2010	Daphne P. Kufeldt	1931-2001	Larry Schwensen	1942-2024
Gretchen Dinsdale	1925-2020	Thomas D. Kuhn	1941-2004	Charlie Scott	1910-1999
Edwin H. Eilts	1925-2022	William H. Kuhn	1928-2019	Summer (Paulsen) Simon	1983-2020
Marjorie Eilts	1922-1989	Raymond Kula	1913-1996	Betty Stanislav	1932-2023
Fritz Engel	1932-2004	Ruth Kula	1928-2015	Raymond Steger	1921-2005
Janet Engel	1933-2009	Edith Kunz	1925-2024	Leonard Steger	1923-1987
Pat Engel	1967-1984	Willard Kunze	1940-2023	Lois Steger	1927-2009
Elton Erickson	1934-2024	Jane Kurz	1948-2024	Richard J. Steiner	1989-2020
Joyce Everett	1941-2024	Evelyn Kurz	1923-2024	Aaron Stephenson	1977-2023
Nancy Faeh	1939-2024	Guy Lamberson	1912-1996	Duane Stuart	1941-2024
Carolyn Falk	1944-2024	Pauline Lamberson	1917-2014	Vernon Svitak	1933-2024
Rexford Ferris	1913-1998	Frances Larsen	1941-2024	Gerald Swanson	1939-2024
Donna Ferris	1915-2003	Regina Lehr	1921-1989	Jack Sweet	1949-2024
Ruth Ferris	1940-2024	Carol Lemmerman	1927-2023	Donald Thies	1935-2024
Lester Fishler	1911-1964	Fred Lewis	1903-1994	Victor Tibbetts	1949-2024
May Fishler	1915-2008	Esther Lewis	1911-2001	Stan Torpin	1916-2003
John Forbes, Sr.	1938-2024	Shirley Mae Lewis	1936-2024	Effie Torpin	1914-2010
Philip "Phil" Foulk	1929-2024	Benjamin Thomas Lindner	2012-2012	Joan Viergutz	1931-2011
Bob Freeland	1929-2020	Dick Lippincott	1922-2009	LaNelle Wegner	1924-2024
Willa Freeland	1934-2019	Rosalie Lippincott	1927-2022	Holly Willhoft	1903-1971
Rebecca Freeland	1956-2024	Janet Lippincott	1951-2020	Alene Willhoft	1906-1979
Maynard Fullington	1934-2017	James "Jamie" Lockwood	1979-2024	Raymond Williams	1943-2024
Edward Gentleman	1920-2001	Dale Lunsford	1944-2024	Richard Wruble	1937-2024
Della Geren	1911-1997	Dr. William Marsh	1948-2021	Patricia Wurtz	1935-2024
M. R. Rube Geren	1904-1963	Dr. Richard H. Mattson	1941-2014	Raymond Zelasney	1943-2024
Craig Gause	1952-2023	Donald McClellan	1923-2024	Brynlee Zimelman	2016-2018

Donors by Fund

Aaron Stephenson Memorial Scholarship

Donald & Judy Ritta

American Legion Baseball

Russell & Debra Flesch
Carol Ann Holz
Jack & Carmen McMahon
Deb Reeves

Archer Evangelical Community Cemetery

Kevin & Ann Brown

Bader Park Endowment

Darrell Widman

Barbara A. & Floyd M. Gorgen

Richard & Susan Owens

Benjamin Thomas Lindner Memorial Scholarship

Virgil & Nora Lindner

Berney-Manuel Scholarship

George & Dottie Manuel

Bison After School Program

Russell & Debra Flesch
Heartland United Way
Merrick Foundation, Inc.
Nebraska Children And
Families Foundation

Bison Athletic Booster Club

AR Exteriors LLC
Archer Credit Union
Tim & Sandy Bolling
Central City Mall
Central City Scale, Inc.
Central City Veterinary Clinic
Chasity K. Pfeifer Insurance
Rob Cline
Constellation Business
Group, LLC
Cornerstone Bank
Blake & Sarah Cover
Dairy Queen
Tyler & Amy Dishman
First State Bank
Darin & Chevonne Garfield
Green Plains Central City, LLC

Shane & Nicole Greving
Hamilton Telecommunications
Jason & Holey Hanke
JAG Acres, Inc.
Jeff & Amber Jensen
Jeff & Carly Johnson
Kristen R. Hermansen-Ryan
DDS, P.C.
Luebbe Ag
Rex & Leanne Luebbe
Merrick Foundation, Inc.
Next Level Chiropractic P.C.
Kevin & Michelle Ohlman
Pinnacle Bank
Prairie Creek
Vineyard & Winery
Aaron & Jill Purvis
Ryan & Kristen Ruhl
Scott & Gabrielle Saltzgaber
Shannappel LLC
Brian & Cori Story
Taco John's
Trav's U-Save Pharmacy
VRL Construction, Inc
Wegner Monument Co.
Shane & Chris Welte
Jared & Sheila Wetovick
You Are Worth It, LLC

Bison Volleyball Club

PepsiCo Beverages

Bob & Bonnie Clark Memorial Scholarship

Robert Virgil Clark Estate

Bob & Willa Freeland Memorial Flower Garden

Jeffrey & Leonora Freeland
Nicholas & the late
Becky Freeland

Brynlee Zimbelman Memorial Scholarship

Brenda Zimbelman
Matthew & Dallas Zimbelman

Central City Public Library Endowment

Richard Ahlschwede
Susan R. Black & Mark Seader
Doug & Gail Brand

Roger & Sharon Brandes
Dr. Jerome & Doris Gacke
Donald Lewis
Jackie Sampson
Edward & Jeanette Sitzman

Central City Public Library Special Project

Heartland United Way
Virgil & Nora Lindner

Central City Scale-Ron & Jeanette Hawthorne Scholarship

Central City Scale, Inc.

Central City Senior Center

Russell & Debra Flesch

Central City Sertoma

William & Ruth Cunningham
Becky Patterson

Central City Track Club

Andrew & Natalie Pearson
Clay & Courtney Retzlaff

Central City Trails Endowment

Dr. Jerome & Doris Gacke
Charles & Kathleen Griffith
Paul & Bernadette Korslund
Darrell Widman

Central City Volunteer Fire Department

Harry Galusha
Donald Lewis
Tallgrass
April Walgren

Chris & Kiki Fasbender Acorn

Chris & Kirstin Fasbender

Christmas of Sharing

Norman & Linda Balliet
Evan & Roxanne Brandes
Central City United
Methodist Women
Cornerstone Bank
Carl & Dawn Dickinson

Larry Doll
Eastern Star Arbor
Chapter No. 200
Stanley & Gail Ferris
Russell & Debra Flesch
Natalie Foulk
Heartland United Way
Robert & Evelyn Herbig
Joe Hesselgesser
Joyce Kuhn
Palmer Womens Club
Presbyterian Church of
Central City
Nicholas & Kristen Ryan
Charitable Fund
Vernon & Deloris Sawyers
St. Michael's Altar Society
Brent & Miriam Wells
Patricia Young

Clarke Acorn

Dr. Jeff & Kristy Clarke

Clarks Cares

Northeast Nebraska
Telephone Company

Clarks Friends of the Library

Dean & Deborah Beck
Deryel & Paula Beck
Bucktail Lake Association
C & J Langley Enterprises, Inc.
Carlson Construction
Joe & Christine Carlson
Cedar Valley Lumber
Clarks, LLC
Peggy Church
Clarks Ag Supply
Clarks Public Library
Richard Dubas
Kent & Cheryl Erickson
Farmers State Bank
Leroy & Sharon Geier
Hans Service LLC
Heartland United Way
Kayla Jameson
Bryan Janulewicz
Jim Janulewicz
Dennis & Julie Jarecke
Arlyce & Barbara Kohl
John & Barbara Kohl
Kwik Stop

Timothy & Raedene Lamb
Manstedt K-Lawn LLC
Merrick County
Merrick Foundation, Inc.
Albert & Barbara Micek
Myers Insurance, Inc.
Rodney & Loretta Pollard
Steven M. Rafferty
Peggy Rahe
Red Carpet Lawn Care LLC
Resilient Rehab
Steven & Judy Rieken
Sharon Russell
Leona Scherer
Dave & Diane Schultz
Strobel Properties, LLC
Robert Truesdell
Randall & Susan Ward
Monte & Nancy Williams

Clarks Schools

Alex & Susan Kufeldt
Mary Kuhn
Reginald Kuhn
Clay & Courtney Retzlaff

Clay & Courtney Retzlaff Acorn

Clay & Courtney Retzlaff

Darrell & Twila Widman Endowed Chapman Township Cemetery

Darrell Widman

Darrell & Twila Widman Endowed Medical Scholarship

Darrell Widman

Darrell Widman Expendable Donor Advised

Darrell Widman

David & Katrina Lee Acorn

Central City Veterinary Clinic

Dinsdale Sophomore Scholarship

Gloria Dinsdale Estate

Donors by Fund

**Donald R. & Jackie
Sampson Scholarship**
Heartland United Way -
Jackie Sampson

**Donald Thies Memorial
Scholarship**
Roger & Esther Adams
Sherree Dangberg
P.B. & M.C. Farley
David & Lyla Moulden
Judi Murtaugh
Jackie Olson
Todd & Luann Peverill
Donald Thies Estate
Duane Thies
Troy & Tami Wood

**Dorothy Adkinson
Memorial Acorn**
Donald & Karen Benner

Ed & Laurie Dexter
Ed & Laurie Dexter

**Ed & Laurie Dexter
Scholarship**
Ed & Laurie Dexter

**Edward Gentleman
Memorial Scholarship**
Edward Gentleman
Foundation Trust

**Elton & Nancy
Erickson Scholarship**
Nancy Erickson

**Emil & Donna Steinke Family
Endowed Discretionary**
Robert & Christine Steinke

Evan & Roxanne Brandes
Evan & Roxanne Brandes

**Fred, Esther, Donald &
Shirley Mae Lewis Family
Scholarship**
Donald Lewis

**Gail Gregg Ferris
Registered Nurse
Scholarship**
Stanley & Gail Ferris

General Endowment
Matthew & Janelle Armstrong
Rene Blauhorn
Central City Class of 1960
D. Y. Clark Fund
Ilene Dearing
Carl & Dawn Dickinson
Timothy & Peggy Engel
Tammy Erickson
Chris & Kirstin Fasbender
Zebadiah & Shauna Graham
Shane & Nicole Greving
Heartland United Way
Marilyn Heins
Curtis & Christine Huber
Alex & Susan Kufeldt
Lone Tree Quilt Guild
Carol Lunsford
Jack & Kay Lyons
Pinnacle Bank
Mark & Shanien Schmierer
Betty Stanislav
Rick Tank
Union Pacific Railroad
Company
Tom & Nancy Wagner
Carole Webster
David & Lois Wegner
Darrell Widman

**Guy & Pauline Lamberson
Memorial Scholarship**
Kernell/Lamberson
Charitable Fund
Rodney Lamberson
William Lamberson

**Harry F. Prochaska &
Edith Stone Prochaska
Scholarship Endowment**
Patricia Prochaska Trust

**Heartland Council of
Community Foundations**
Custer County Foundation

**Heartland Veterans
Memorial Endowed
Maintenance**
Russell & Debra Flesch
Curtis & Christine Huber

**Heartland Veterans
Memorial Tribute**
Ron & Tricia Herman
Family Fund
Jack & Carmen McMahon

**Hohnroth Family
Scholarship**
Allen L. Hohnroth &
Renee E. Berlin
Nancy Hohnroth
Darrel & Martha Rodgers

**Hunter Philip Hawthorne
Memorial Scholarship**
Thomas & Janaan Hawthorne

**Joe Costello's T.R.I.S.H.
Memorial**
Jeffrey & Leonora Freeland

**LaNelle Wegner
Expendable Scholarship**
Carolyn Wegner

**Larry Dearing, DVM
Memorial Scholarship**
Ilene Dearing

**Leland & Shirley
Greving Scholarship**
Shirley Greving

**Lester & May Fishler and
Raymond & Ruth Kula
Memorial Scholarship**
Marvin & Vicki Fishler

**Lindner-Van Pelt Heritage
Scholarship**
Virgil & Nora Lindner

**Litzenberg Memorial Long
Term Care**
Donald & Janet Placke

**Maynard & Lois
Fullington Scholarship**
Lois Fullington

Merrick Arts Council
Lennis & Patricia Benson
EyeCare Associates
Dr. Jerome & Doris Gacke
David & Donna Jorgensen
Kristen R. Hermansen-Ryan
DDS, P.C.
Virgil & Nora Lindner
Lone Tree Singers
Jack & Kay Lyons
Charles & Jacquelyn Mason
Prairie Creek Vineyard
& Winery
Neil & Margenne Selko
Carol Stewart
Vickie Van Hall

**Merrick Arts
Council Endowment**
Steve & Suzanne Philippi

**Merrick County Child
Development Center**
Curtis & Christine Huber
Darrell Widman
Brenda Zimbelman

**Merrick County Child
Development Center
Scholarship**
Tom & Nancy Wagner

**Merrick County Historical
Museum Endowment**
Rene Blauhorn
Evan & Roxanne Brandes
Roger & Sharon Brandes
Julie Bringelson
Lawrence & Kris Coates
Edwin H. Eilts Trust
David Ferris
G. Steven Ferris
Jay & Tammie Ferris
Helmut Filian
Russell & Debra Flesch
Zebadiah & Shauna Graham
Tom Hickey
Curtis & Christine Huber
Russell & Carolyn Kucera

Amanda Lu
Brian & Angela Murphy
Kay Owens
Daniel Regan
Clay & Courtney Retzlaff
Darrel & Carolyn Siekman
Darrell Widman

**Merrick County
Museum Special Project**
Archer Credit Union
James & Kathleen Bartley
Deryel & Paula Beck
Susan R. Black & Mark Seader
Bill & April Bolte
William & Connie Bolte
Evan & Roxanne Brandes
Evan & Roxanne Brandes Fund
Darrin & Leah Brown
Kris Brown
Central City Class of 1971
Central City Veterinary Clinic
Dale & Barbara Church
John and Janice Connor
Charitable Fund
Cornerstone Bank
Lisa Cox
Donald Daberkow
Dammann Farms
Max & Judy Elliot
Brenda Fee
David & the late Ruth Ferris
Stanley & Gail Ferris
Vonn Ferris
Fillmore County
Genealogical Society
Mary Foley
Virginia Fraser
Richard & Marlene
Friedrichsen
Garwood Family Limited
Partnership
Lyle & Marlene Garwood
Jerel Geren
William & Sharon Gilg
Shirley Greving
Hanke Farms Inc
Debra Hartford
Gary & Cherlyn Haussermann
Scott & Deb Hawthorne
Ron & Tracey Hefner
Curtis & Christine Huber
Donald & Myra Imhof

Donors by Fund

Melvin & Paula Jacobs
Greta Johnson
Richard & Nancy Johnson
Joyce Kresnicka
Reginald Kuhn
Wayne Larson
Virgil & Nora Lindner
Jerry Lippincott
Randall Lippincott
Joan Manning
Annabelle Marsh
Thomas & Kaye Mattson
James & Martha McGahan
Merrick County
Historical Museum
Lynne Black Messersmith
Dan and Deborah Nedrig
Barbara Ogden
Richard and Pamela Ogden
Donald & Sandra Ohlman
John O'Meara
Kay Owens
Pinnacle Bank
Donald & Janet Placke
Beth Pullen
WM J. Pullen
Tom Rathman
Don & Barbara Reeves
Clay & Courtney Retzlaff
Linda Riblett
Virginia Rice
Brenda Rish
Michael & Kathleen Ritta
Jackie Sampson
Rose Schwensen
Darrel & Louise Sebre
Matt and Kathy Shonsey
Charitable Fund
Rick Tank
E. Thomas & Beverly Thurber
Alice Torpin
Tom & Nancy Wagner
Rex & Gloria Weller
Darrell Widman
Arnold & Hildur Willhoft
Acorn Fund
Jon & Ricki Yocom

**Merrick Foundation Pass
Through Scholarship**
Heartland United Way - Eric &
Mary Steiner
Joe Hesselgesser
William Lamberson

Mike & Tricia Schuller Acorn
Mike & Tricia Schuller

Miscellaneous
Donor Designated
Anonymous
Evan & Roxanne Brandes
Darrin & Leah Brown
Dr. Jerome & Doris Gacke
Curtis & Christine Huber
Beth Johnson
Kent Johnson
Wilton & Georgia Johnson
Jeffrey and Jacqueline
McCullough Donor Fund

Platte PEER Group
Tom & Nancy Wagner
John & Teresa Wayne

Neal Thomas Memorial
Rodney & Loretta Pollard

**Nebraska Therapeutic
Riding Academy**
Curtis & Christine Huber

**Nicholas & Kristen
Ryan Charitable**
Nick & Kristen Ryan

Operating Fund
D. F. Sampson Fund

Palmer Cemetery
Virgil & Nora Lindner
Donna Trueblood

**Palmer Commercial Club -
Digital Marquee Sign**
Palmer Commercial Club

Palmer Community
Clay & Courtney Retzlaff
Randy & Heather Shotkoski
Neil & Kate Wegner

**Palmer Public Schools
Endowment**
Troy & Launa Cumpston
Anita Dankert
Leolla Davis
Lawrence & Jeanne Happ
Norman & Carol Jean Hietbrink

Donna Kunze
Kevin & Kelly Kunze
Virgil & Nora Lindner
Taffy Lockwood
Rich & Sherise Loeffelbein
Maplewood Corners - Palmer
Housing Authority
Ardythe & Wayne Moeller
Palmer Public Schools
Pinnacle Bank
James & Rebecca Plambeck
Clay & Courtney Retzlaff
Doug & Laurie Retzlaff
Greg & Sandy Royle
Randy & Monica Simonson
Richard & Jeanette Spiehs
Kenny & Sharon Tibbetts
Carolyn Wegner
David & Lois Wegner
Kathy Wegner
Shane Wegner
Rex & Gloria Weller
Bradley & Chris Wichmann
Tyler & Sy Wichmann
Jay & Kathy Wolfe

**Palmer Public Schools
Endowment - Fine Arts**
Gloria Dinsdale Estate

**Palmer Public Schools Track
Facility**
Heartland United Way
Inventory Trading Company

**Palmer Schools,
Jack Dinsdale**
Palmer Community
Foundation, Inc. - John A. &
Gretchen Dinsdale
Charitable Foundation

**Palmer Youth Sports
Association**
Heartland United Way
Palmer Youth Sports
Association

**Raymond, Leonard &
Lois Steger Memorial
Scholarship**
Lois Steger Estate

**Scott/Ruge &
Friends Memorial**
Charlie Kelley
Neil & Margenne Selko

**Shirley Mae Lewis
Memorial Scholarship**
Donald Lewis

**Silver Creek
Alumni Scholarship**
Silver Creek Alumni
Association

Silver Creek Endowment
Silver Creek Expendable Fund

**Stanley Ferris
Agriculture Scholarship**
Stanley & Gail Ferris

**Summer Paulsen Simon,
Class of 2001, Memorial
Scholarship**
Steven & Darla Belitz

**Tim Christensen
Memorial Scholarship**
Lacey Campbell
Ann Christensen

**Tom & Nancy Wagner
Scholarship**
Tom & Nancy Wagner

Tom McMahon Memorial
Jason McMahon

**Tyler Hook Hillmer
Memorial Scholarship**
Anonymous
Brehm Drug, Inc
Cornerstone Bank
Matthew Green
Bill & Missy Hillmer

Veterans Memorial
Albert & Barbara Micek

**Virgil & Nora Lindner
Scholarship**
Virgil & Nora Lindner

Volunteer Nebraska
Gregory Dobesh
Jacquelyn Gfeller
Mary Ingram
St Paul Women of the ELCA
The Vetter Foundation
Christopher and Cori Waters
Donor Advised Fund

**Warren & Virginia Marsh
Memorial Scholarship**
Annabelle Marsh

**Wayne & Mildred
Hilder Scholarship**
Kay Hilder
Todd Hilder

**Willa Freelend, Women in
Business Scholarship**
Jeffrey & Leonora Freelend
Nicholas & the late
Becky Freelend

**William L. & Velma R.
McLean Scholarship**
Dr. George L. McLean

**Wright Morris Home
Restoration**
Wendy Apple
John & Ruth Carrington
Lone Tree Literary Society

You Are Worth It Scholarship
Russell & Debra Flesch
Zebadiah & Shauna Graham
Dan Kunzman

**Zeb & Shauna Graham
Family Acorn**
Zebadiah & Shauna Graham



Merrick Foundation, Inc.

1532 17th Ave., Suite B
Central City, NE 68826
(308) 946-3707

ECRWSS or Current Resident

Nonprofit Org.
U.S. POSTAGE PAID
Central City, NE
Permit No. 6

Connecting people who care with causes that matter.

Address Service Requested

Celebrating 65 years



We are deeply grateful to the generous, philanthropic individuals who have helped shape Merrick Foundation into what it is today. While this is not a complete list of donors, those pictured above include Donald F. & Esther Sampson, Alfred & Elizabeth Bader, Ed Santin, Eugene Fishburn, and Donald Nouzovsky.



www.merrick-foundation.org



facebook.com/MerrickFoundation



merrickfoundation@gmail.com



[@merrickfoundation](https://www.instagram.com/merrickfoundation)



Merrick Foundation: Making an Impact Together
PODCAST